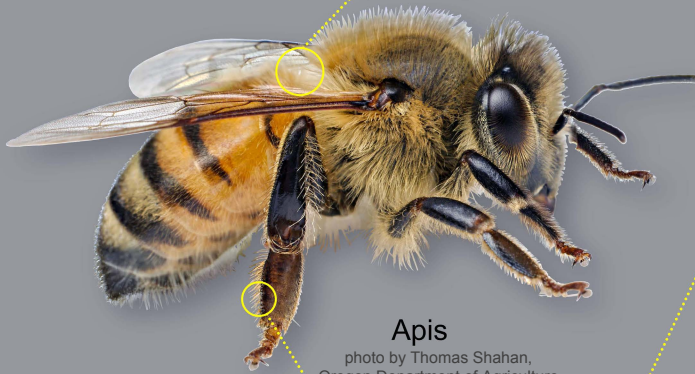


Mites found on adult honey bees (genus *Apis*)

Acariformes: Astigmata

All mites without magnification signs (e.g., "2x") are approximately to scale.

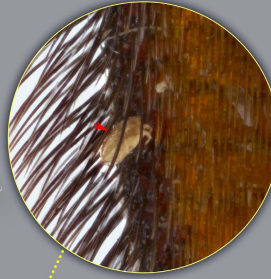
mites on bee (lower magnification)



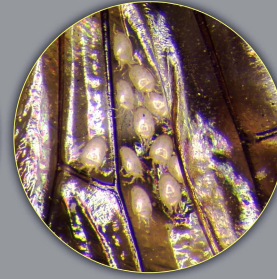
Apis

photo by Thomas Shahan,
Oregon Department of Agriculture

usually attaches to
hind tibia and tarsus



Lasioacarus



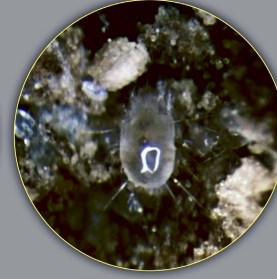
Histiotostoma



Anoetus



Vidia



Tyrophagus

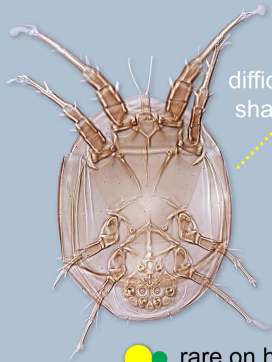


Aeroglyphus

slide-mounted mites at higher magnification (some can be distinguished by shape)

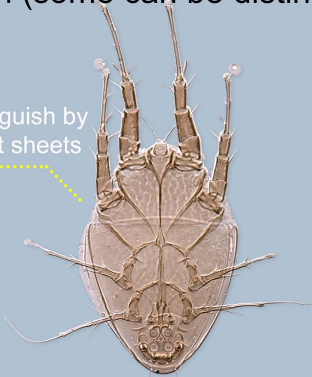


Lasioacarus (phoretic deutonymph)



Histiotostoma (phoretic deutonymph)

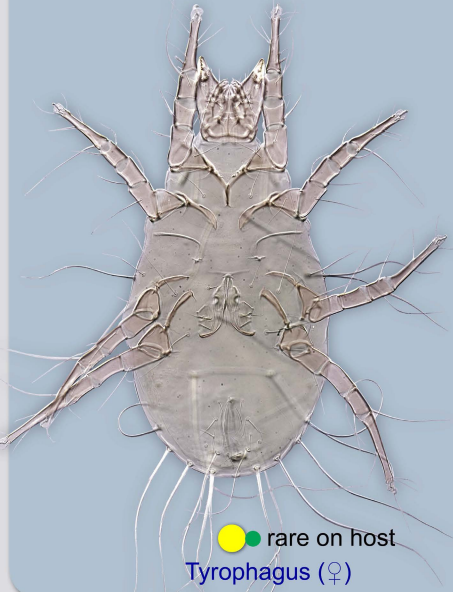
difficult to distinguish by
shape; use fact sheets



Anoetus (phoretic
deutonymph)



Vidia (phoretic deutonymph)

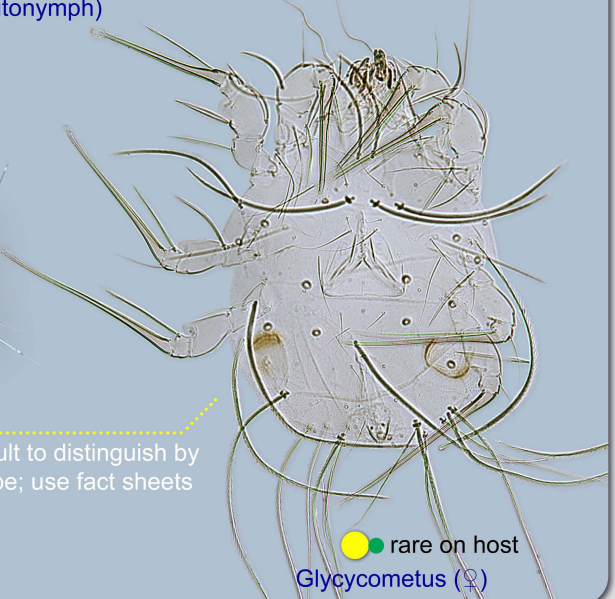


Tyrophagus (♀)



Aeroglyphus (♀)

difficult to distinguish by
shape; use fact sheets



Glycycometus (♀)

Acariformes: Prostigmata

All mites without magnification signs (e.g., "2x") are approximately to scale.

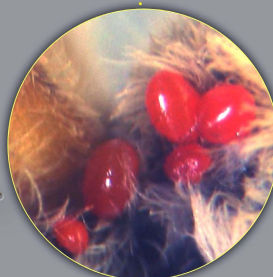
mites on bee at lower magnification

host paralyzed at this stage



Apis
photo by Thomas Shahan,
Oregon Department of Agriculture

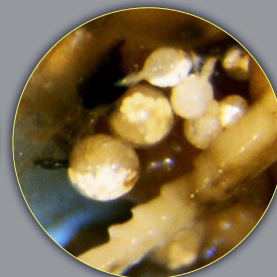
inside tracheal system (*A. woodi*);
other species found externally



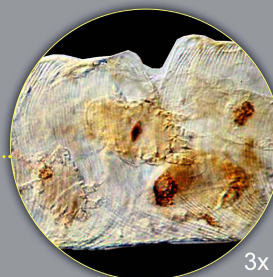
Leptus



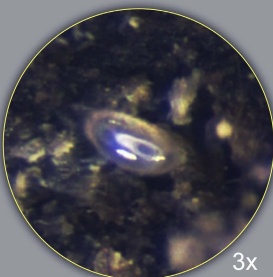
Pyemotes (♀)
5x



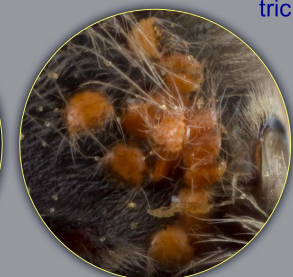
Pyemotes (♀♀, physogastric)



Acarapis woodi
3x

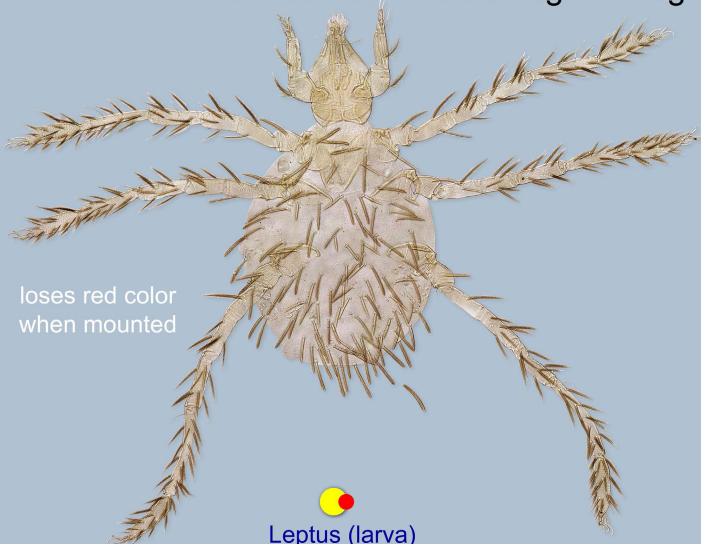


Tarsonemus
3x



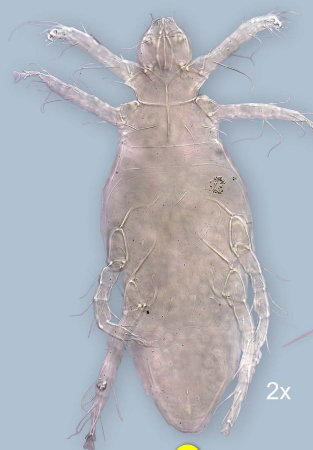
Imparipes

slide-mounted mites at higher magnification (some can be distinguished by shape)

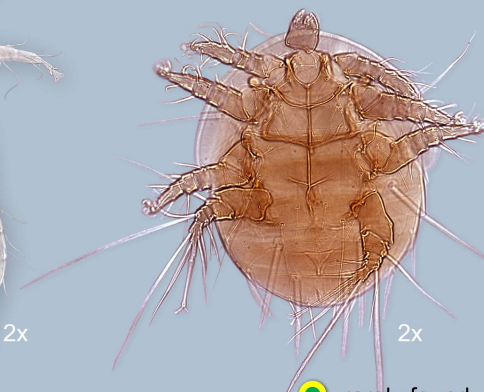


loses red color when mounted

Leptus (larva)



Pyemotes (♀)
2x



Imparipes (♀)
2x
rarely found

difficult to distinguish by shape; use fact sheets



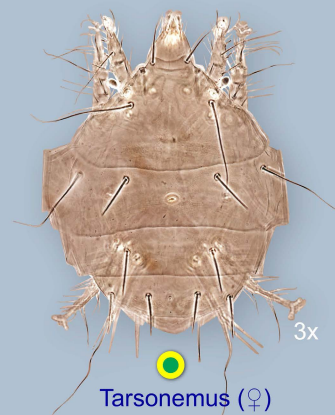
Acarapis (♀)
3x



Acarapis (♂)
3x



Pseudacarapis (♀)
3x



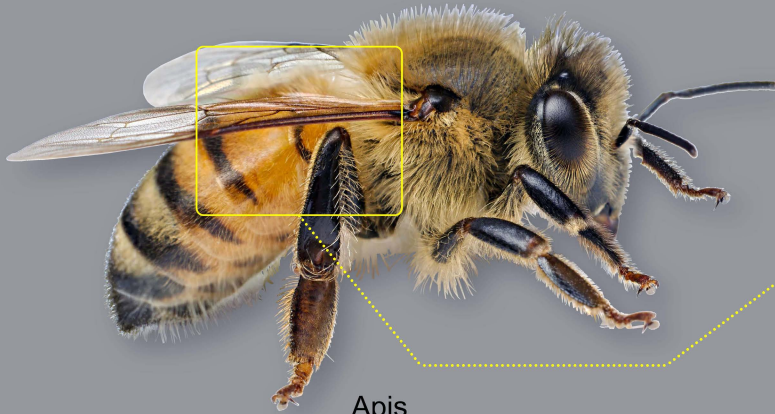
Tarsonemus (♀)
3x

Mites found on adult honey bees (genus *Apis*)

Parasitiformes: Laelapidae

All mites without magnification signs (e.g., "2x") are approximately to scale.

mite on bee



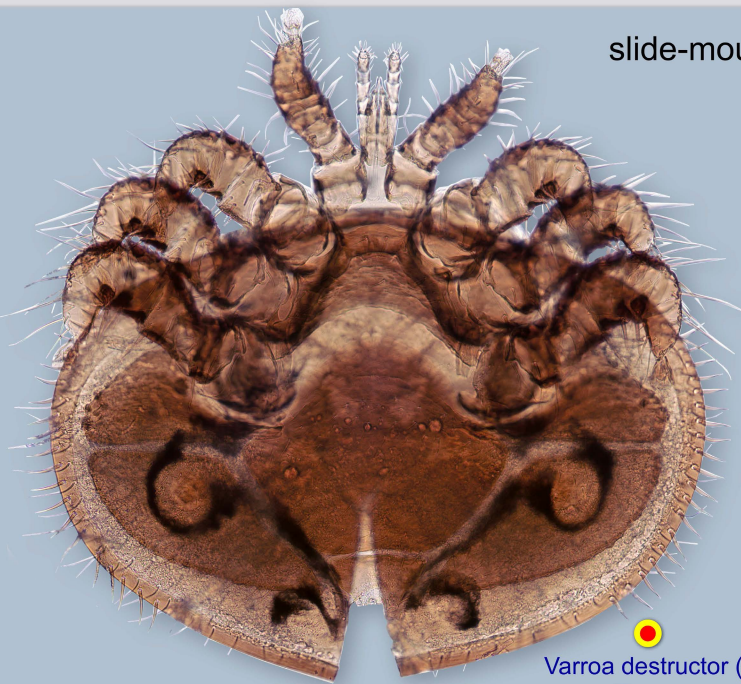
Apis

photo by Thomas Shahan, Oregon Department of Agriculture

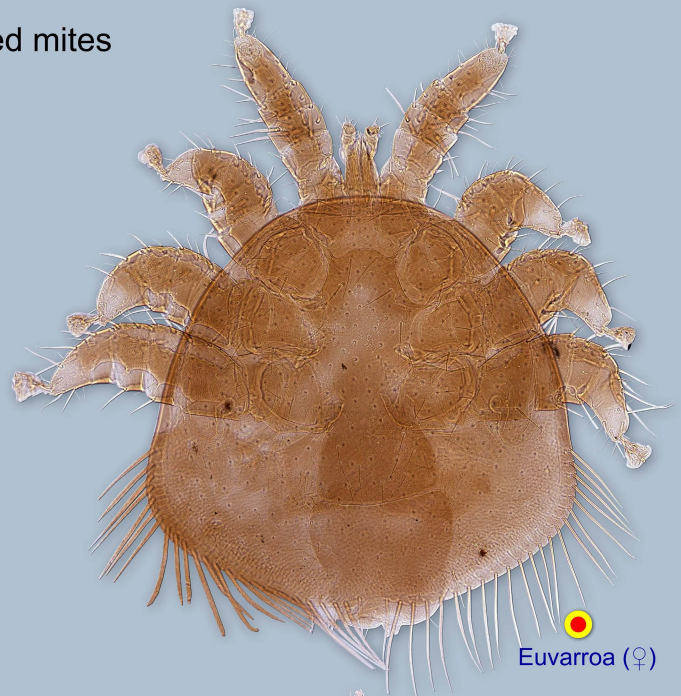


Varroa

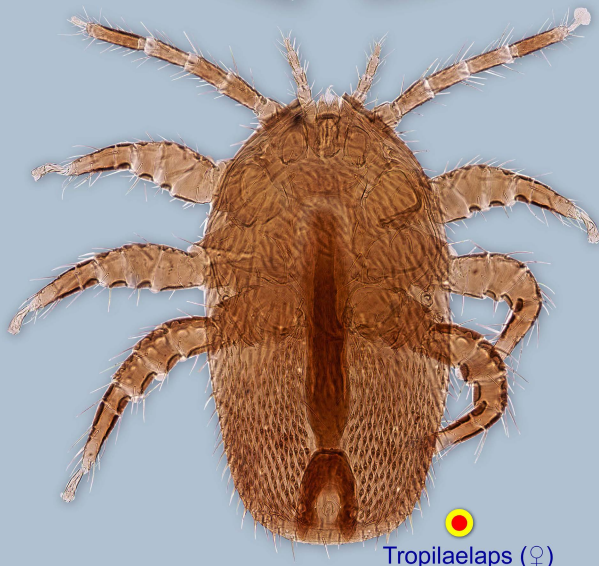
slide-mounted mites



Varroa destructor (♀)



Euvarroa (♀)



Tropilaelaps (♀)



Melittiphis (♀)



associated exclusively with bees



some life stages associated with bees, while others are not



can complete entire life cycle without bees



harmful to bee



not harmful to bee

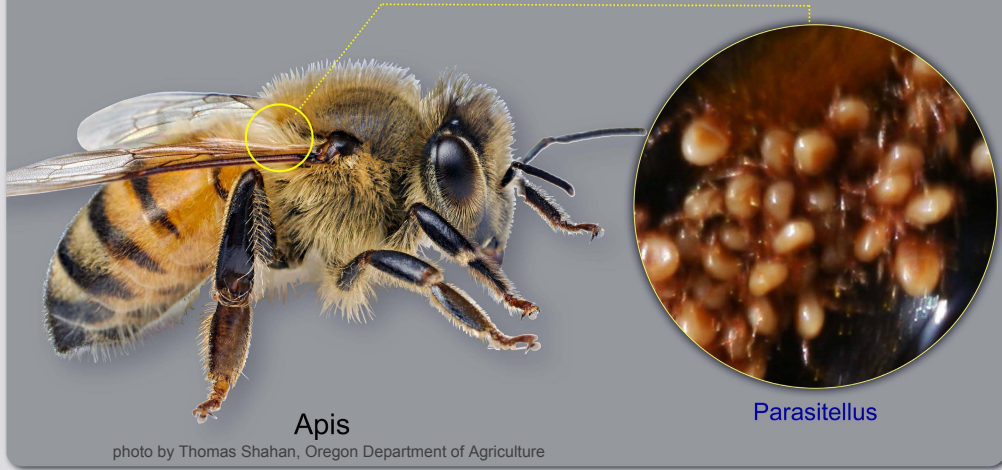


unknown

Mites found on adult honey bees (genus *Apis*)

Parasitiformes (2)

mites on bee at lower magnification

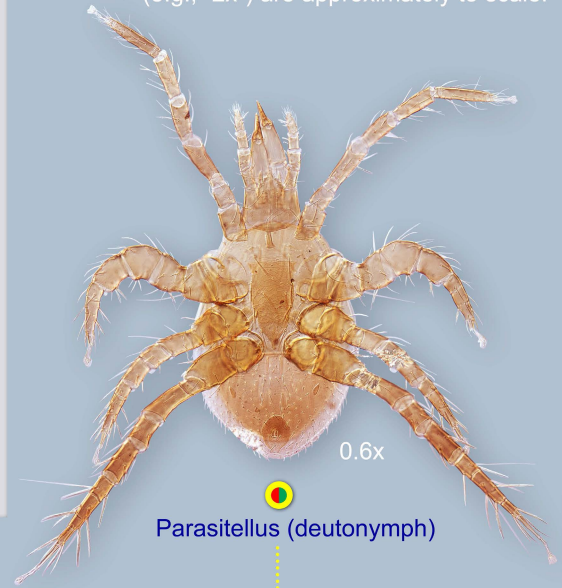


Apis

photo by Thomas Shahan, Oregon Department of Agriculture

Parasitellus

All mites without magnification signs (e.g., "2x") are approximately to scale.

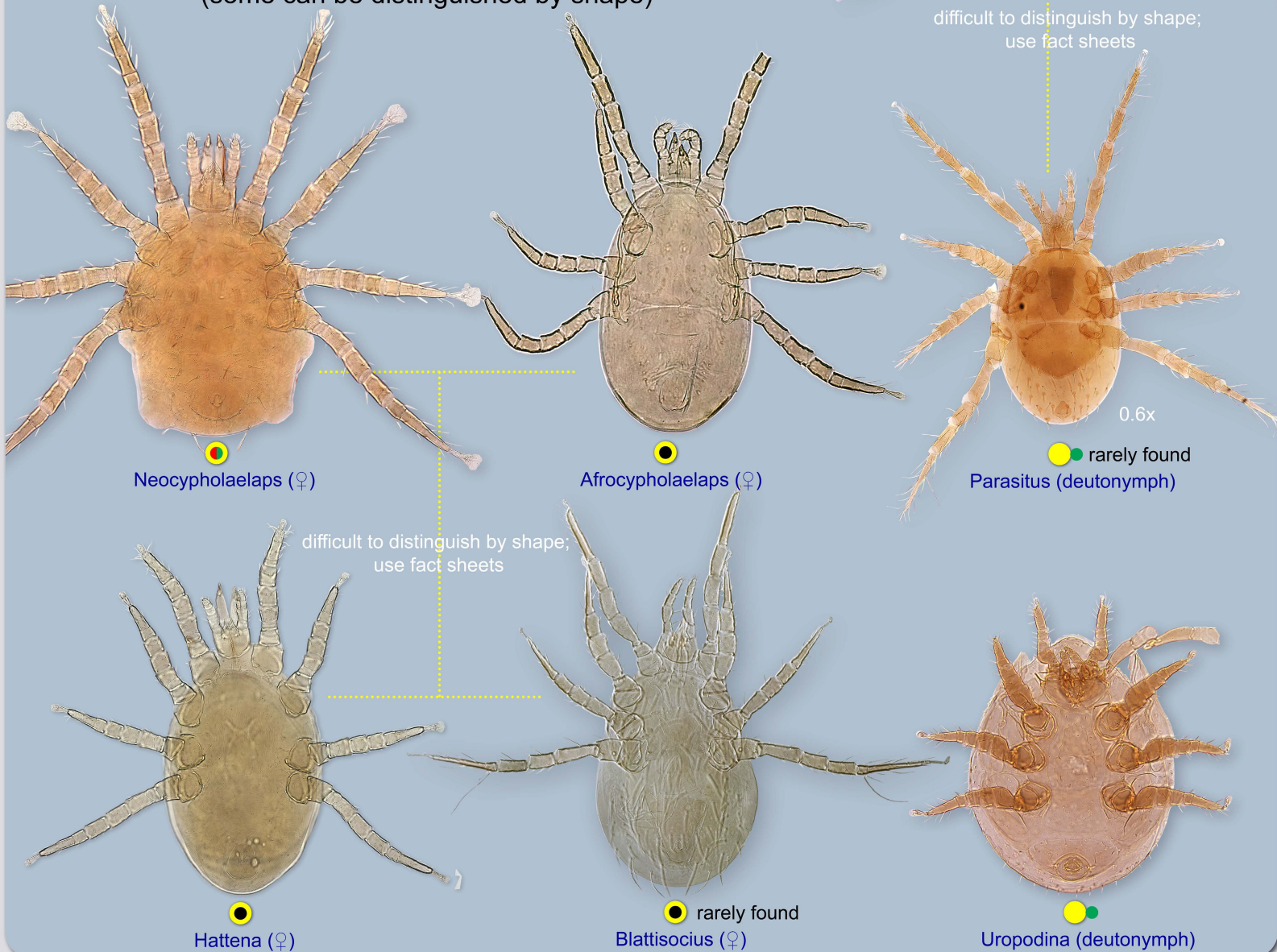


0.6x

Parasitellus (deutonymph)

difficult to distinguish by shape; use fact sheets

slide-mounted mites at higher magnification (some can be distinguished by shape)



Neocypholaelaps (♀)

Afrocypholaelaps (♀)

0.6x

rarely found
Parasitus (deutonymph)

difficult to distinguish by shape; use fact sheets

Hattena (♀)

rarely found
Blattisocius (♀)

Uropodina (deutonymph)